



2024 Impact Report

The Governor's School for Entrepreneurs hit some exciting milestones in 2024, including the number of counties and students served. We're so grateful for your support as we work to identify, inspire, and empower Kentucky's up-and-coming entrepreneurs.

Summer Startup

During our intensive, inspirational three-week program, high school students develop life-changing entrepreneurial skills.

Collegiate Pitch

College teams from across Kentucky make their pitches, competing for funds to pursue their business dreams in the Bluegrass.

The Ecosystem

We're building an active network of GSE's Summer Startup and Collegiate Pitch alumni. Events, support, networking, and more.

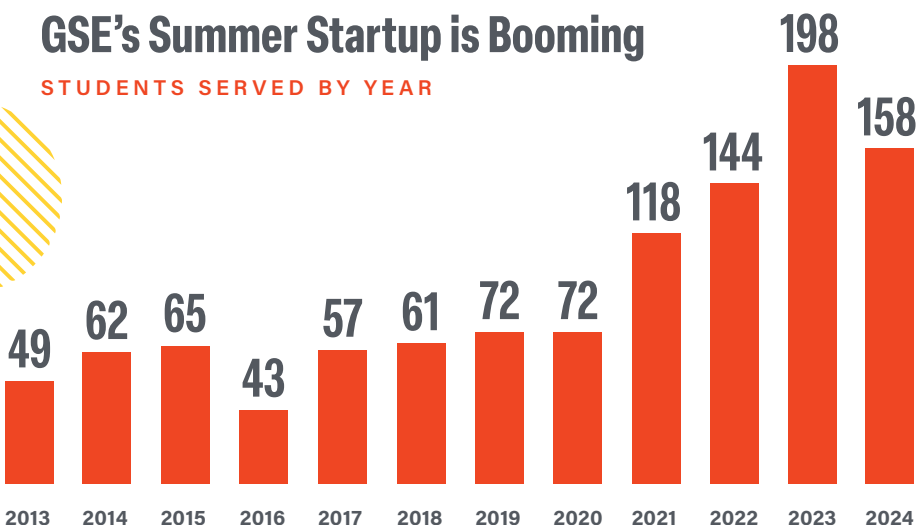


1,099

**Young Entrepreneurs
Empowered Since 2013**

GSE's Summer Startup is Booming

STUDENTS SERVED BY YEAR



“There’s really nothing like it that I’ve ever been able to do at my school. It’s so open and supportive.”

Robert Holdsworth

WARREN COUNTY

“I’ve always known I wanted to do something in the business world, but I’ve never known where to start. This is guiding me and telling me it’s possible. After this I know what to do.”

Lucia Guido

DAVIESS COUNTY

“It’s a lot of work but also really fun. I made new friends, and we’ll be friends for a long time. If I could come here again next year, I would.”

Yazan Elfarrar

OLDHAM COUNTY

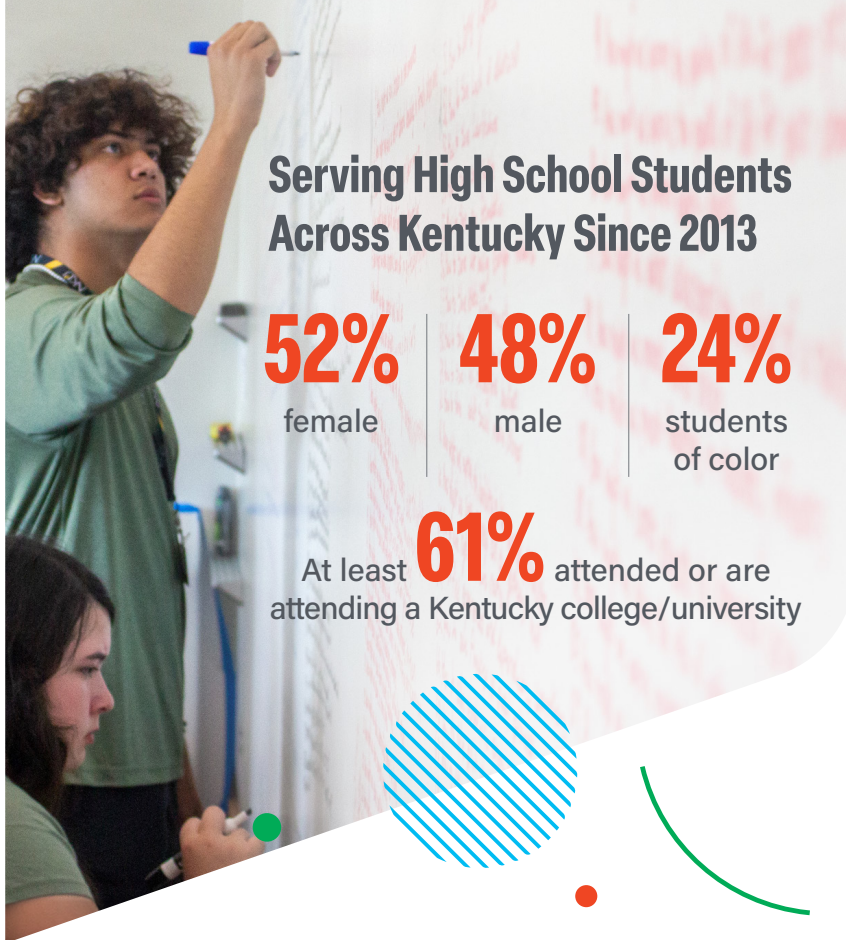


**Boosting Business
in the Bluegrass**

70+



Kentucky-based
businesses launched by
Summer Startup alums



Serving High School Students Across Kentucky Since 2013

52%

female

48%

male

24%

students of color

At least **61%** attended or are attending a Kentucky college/university



101 
Counties Served

Collegiate Pitch: A GSE Game Changer Since 2019

19 colleges served



154

pitches judged

48

Kentucky-based businesses awarded funds

328

alums



“It’s a great opportunity. A steppingstone to grow your business.”

CJ Nadler

NORTHERN KENTUCKY UNIVERSITY
PERFECT PRESSURE WASHING

“This is a great start for my company. I got great feedback that will help me move to the next step.”

Maame Abena O. Afrifa

UNIVERSITY OF KENTUCKY
NANOMED ADAPTIVE TECHNOLOGIES

“You’re putting your passion on the line for everyone to see, but it’s 100% worth it. Whether you win or you don’t, it’s experience gained.”

Kaytlin Flowers

SULLIVAN UNIVERSITY
BLOOM BAKERY

Board of Directors

Koleman Karleski, Chair
Randall Stevens, Treasurer
Anne Nash, Secretary
Ceci Conway Boden
Bill Dickens

GSE Leadership Team

Anne Jewell
President and CEO
Erica Rust Pennington
Program Director
Ev Lear
Program Coordinator

“What I’ve learned here is going to stay with me my whole life.”

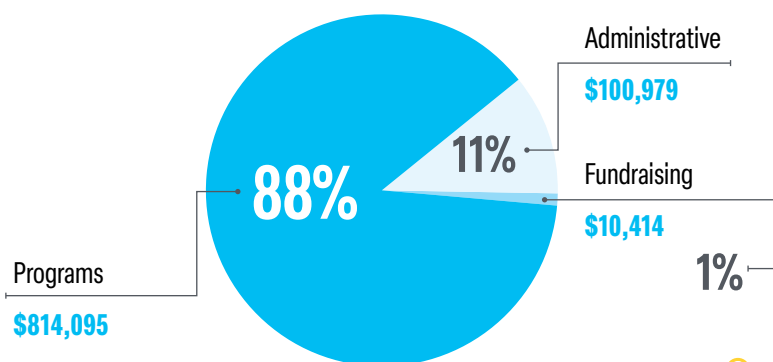
Zaara Amatullah
JEFFERSON COUNTY



2024 Financials

Total Income **\$1,044,908**
Total Ending Net Assets **\$1,472,747**

Allocation of Dollars



Give Back

Our transformative programs are free for students, thanks to generous financial support. Invest in Kentucky's future with us!

DONATE NOW

<https://kentuckygse.com/donate>

